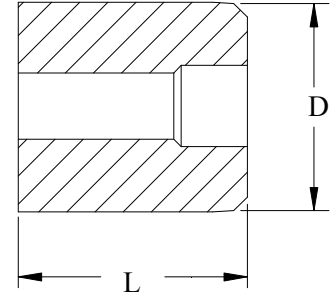


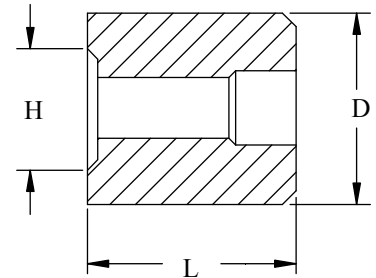
**Flat Head**

Part Number	Drive Size	Screw Size	D	L	H
5TXI-201	T5	1	0.562/14.27	0.375/9.53	
6TXI-201	T6	2	0.562/14.27	0.375/9.53	
7TXI-201	T7	3	0.562/14.27	0.375/9.53	
8TXI-201	T8	4	0.562/14.27	0.375/9.53	
9TXI-201	T9		0.563/14.30	0.375/9.53	
10TXI-201	T10	5 & 6	0.562/14.27	0.625/15.88	
15TXI-201	T15	8	0.562/14.27	0.625/15.88	
20TXI-201	T20	10	0.562/14.27	0.625/15.88	
25TXI-201	T25	12	0.875/22.23	0.625/15.88	
27TXI-201	T27	1/4	0.875/22.23	0.625/15.88	
30TXI-201	T30	1/4	0.875/22.23	0.625/15.88	
40TXI-201	T40	5/16 & 3/8	0.875/22.23	0.750/19.05	
45TXI-201	T45	3/8	1.000/25.40	1.000/25.40	
50TXI-201	T50	7/16 & 1/2	1.000/25.40	1.000/25.40	
55TXI-201	T55	9/16	1.250/31.75	1.000/25.40	
60TXI-201	T60	5/8	1.500/38.10	1.000/25.40	



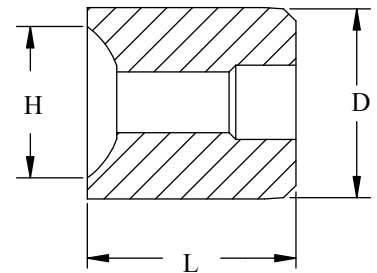
**Socket Head**

Part Number	Drive Size	Screw Size	D	L	H
10TXI-300	T10	4 & 5	0.562/14.27	0.634/16.10	0.183/4.65
10TXI-300A	T10		0.562/14.27	0.634/16.10	0.208/5.28
15TXI-300	T15	6	0.562/14.27	0.635/16.13	0.228/5.79
25TXI-300	T25	8	0.562/14.27	0.635/16.13	0.273/6.93
27TXI-300	T27	10	0.562/14.27	0.638/16.21	0.316/8.03
30TXI-300	T30	1/4	0.875/22.23	0.643/16.33	0.379/9.63



**Button Head**

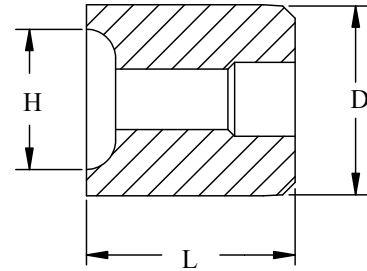
Part Number	Drive Size	Screw Size	D	L	H
6TXI-301	T6	2	0.437/11.10	0.410/10.41	0.168/4.27
8TXI-301	T8	4	0.562/14.27	0.410/10.41	0.216/5.49
10TXI-301	T10	6	0.562/14.27	0.673/17.09	0.242/6.15
10TXI-301A	T10		0.562/14.27	0.671/17.04	0.266/6.76
15TXI-301	T15	8	0.562/14.27	0.688/17.48	0.324/8.23
25TXI-301	T25	10	0.562/14.27	0.705/17.91	0.370/9.40
27TXI-301	T27	1/4	0.875/22.23	0.733/18.62	0.449/11.40
40TXI-301	T40	5/16	0.875/22.23	0.872/22.15	0.560/14.22
45TXI-301	T45	3/8	1.000/25.40	1.141/28.99	0.666/16.92
55TXI-301	T55	1/2	1.250/31.75	1.207/30.66	0.892/22.66
60TXI-301	T60		1.500/38.10	1.276/32.41	1.012/25.70



1. M2 material at RC 60-62
2. Special Head Styles, Head Markings, and Materials available upon request.

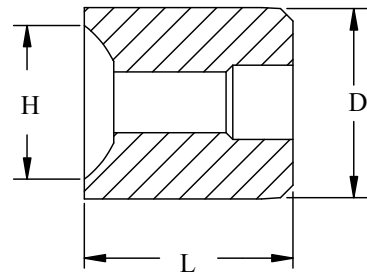
**Pan Head**

Part Number	Drive Size	Screw Size	D inch/mm	L inch/mm	H inch/mm
10TXI-303	T10	6	.562/14.27	.648/16.46	.231/5.87
15TXI-303	T15	8	.562/14.27	.652/16.56	.260/6.60
20TXI-303	T20	10	.562/14.27	.657/16.69	.306/7.77
25TXI-303	T25	12	.562/14.27	.663/16.84	.357/9.07
27TXI-303	T27	1/4	.875/22.23	.668/16.97	.407/10.34
30TXI-303	T30	1/4	1.000/25.40	.675/17.15	.473/12.01
40TXI-303	T40	5/16	1.000/25.40	.812/20.62	.594/15.09
45TXI-303	T45	3/8	1.250/31.75	1.074/27.28	.716/18.19
50TXI-303	T50		1.000/25.40	1.084/27.53	.836/21.23
55TXI-303	T55		1.250/31.75	1.099/27.91	.958/24.33



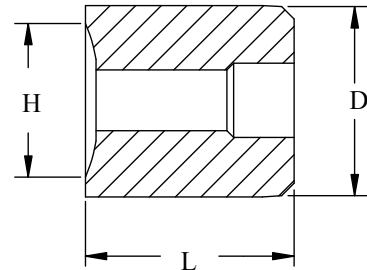
**Truss Head**

Part Number	Drive Size	Screw Size	D inch/mm	L inch/mm	H inch/mm
6TXI-360	T6	2	.562/14.27	.411/10.44	.196/4.98
7TXI-360A	T7	3	.562/14.27	.418/10.62	.228/5.79
8TXI-360	T8	4 & 5	.562/14.27	.426/10.82	.259/6.58
10TXI-360	T10	6	.562/14.27	.689/17.50	.321/8.15
15TXI-360	T15	8	.562/14.27	.701/17.81	.384/9.75
20TXI-360	T20	10	.562/14.27	.713/18.11	.448/11.38
25TXI-360	T25	12	.875/22.23	.726/18.44	.511/12.98
27TXI-360	T27	1/4	.875/22.23	.739/18.77	.573/14.55
40TXI-360	T40	5/16	1.000/25.40	.889/22.58	.698/17.73
45TXI-360	T45	3/8	1.250/31.75	1.164/1.198	.823/20.90
45TXI-360A	T45	7/16	1.250/31.75	1.201/30.51	.948/24.08
50TXI-360	T50	1/2	1.500/38.10	1.215/30.86	1.073/27.25
55TXI-360	T55	9/16	1.500/38.10	1.259/31.98	1.198/30.43
55TXI-360A	T55	5/8	1.500/38.10	1.289/32.74	1.269/32.23
60TXI-360	T60	3/4	1.750/44.45	1.348/34.24	1.511/38.38



**Oval Head**

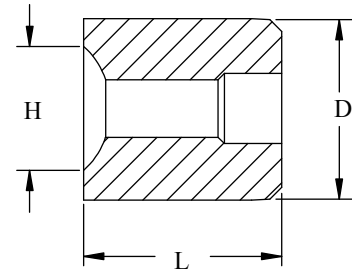
Part Number	Drive Size	Screw Size	D inch/mm	L inch/mm	H inch/mm
6TXI-350	T6	2	.562/14.27	.395/10.03	.174/4.42
7TXI-350	T7	3	.562/14.27	.397/10.08	.201/5.11
8TXI-350	T8	4	.562/14.27	.401/10.19	.227/5.77
10TXI-350	T10	5	.562/14.27	.656/16.66	.252/6.40
15TXI-350	T15	6	.562/14.27	.659/16.74	.290/7.37
20TXI-350	T20	8	.562/14.27	.664/16.87	.345/8.76
25TXI-350	T25	10	.562/14.27	.671/17.04	.400/10.16
27TXI-350	T27	12	.875/22.23	.678/17.22	.456/11.58
30TXI-350	T30	1/4	.875/22.23	.687/17.45	.527/13.39
40TXI-350	T40	5/16	.875/22.23	.829/21.06	.660/16.76
45TXI-350	T45	3/8	1.000/1.25	1.094/27.79	.792/20.12
50TXI-350	T50	7/16	1.000/1.25	1.097/27.86	.812/20.62
50TXI-350A	T50	1/2	1.000/1.25	1.104/28.04	.875/22.23
55TXI-350	T55	9/16	1.250/31.75	1.120/1.135	1.000/25.40
55TXI-350A	T55	5/8	1.250/31.75	1.135/28.83	1.125/28.58
60TXI-350	T60	3/4	1.500/38.10	1.162/29.51	1.375/34.93



1. M2 material at RC 60-62
2. Special Head Styles, Head markings and Materials available upon request.

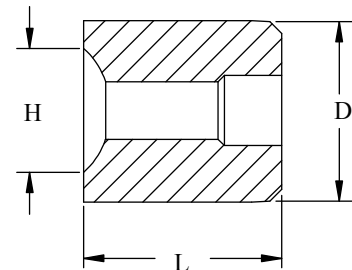
**Pan Head - Full Crown (Forming on Top of Die)**

Part Number	Drive Size	Screw Size	D inch/mm	L inch/mm	H inch/mm
6TXI-307	T6	1	.562/14.27	.373/9.47	.155/3.94
7TXI-307	T7	2	.562/14.27	.375/9.53	.162/4.11
8TXI-307	T8	3	.562/14.27	.375/9.53	.209/5.31
10TXI-307	T10	4	.563/14.30	.654/16.61	.264/6.71
10TXI-307A	T10	5	.563/14.30	.650/16.51	.241/6.12
15TXI-307	T15	6	.563/14.30	.657/16.69	.280/7.11
20TXI-307	T20	8	.563/14.30	.664/16.87	.346/8.79
25TXI-307	T25	10	.875/22.23	.670/17.02	.409/10.39
27TXI-307	T27	12	.875/22.23	.677/17.20	.459/11.66
30TXI-307	T30	14	.875/22.23	.686/17.42	.519/13.18
40TXI-307	T40	5/16	.875/22.23	.827/21.01	.665/16.90
45TXI-307	T45	3/8	1.000/25.40	1.092/27.74	.788/20.02
50TXI-307	T50	7/16	1.250/31.75	1.107/28.12	.913/23.19
55TXI-307	T55	1/2	1.500/38.10	1.123/28.52	1.038/26.37



**Pan Head - Full Crown (Partially in the Die)**

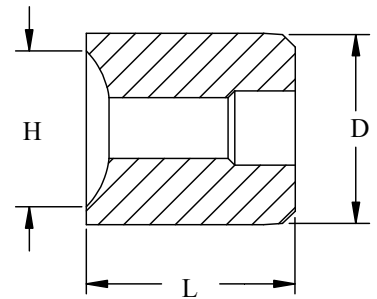
Part Number	Drive Size	Screw Size	D inch/mm	L inch/mm	H inch/mm
6TXI-308	T6	1	.562/14.27	.388/9.86	.137/3.48
7TXI-308	T7	2	.562/14.27	.392/9.96	.162/4.11
8TXI-308	T8	2 & 3	.562/14.27	.397/10.08	.189/.207
10TXI-308	T10	4 & 5	.562/14.27	.663/16.84	.236/5.99
10TXI-308A	T10	5	.562/14.27	.650/16.51	.212/5.38
15TXI-308	T15	6	.562/14.27	.668/16.97	.289/7.34
20TXI-308	T20	8	.562/14.27	.678/17.22	.345/8.76
25TXI-308	T25	10	.875/22.23	.686/17.42	.399/10.13
27TXI-308	T27	12	.875/22.23	.694/17.63	.455/11.56
30TXI-308	T30	1/4	1.000/25.40	.851/21.62	.526/13.36
40TXI-308	T40	5/16	1.000/25.40	.889/22.58	.658/16.71
45TXI-308	T45	3/8	1.000/25.40	1.122/28.50	.792/20.12



1. M2 material at RC 60-62
2. Special Head Styles, Head markings and Materials available upon request.

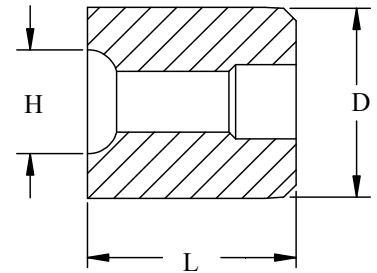
### Fillister Head

Part Number	Drive Size	Screw Size	D inch/mm	L inch/mm	H inch/mm
10TXI-370	T10	4 & 5	.562/14.27	.656/16.66	.196/.219
15TXI-370	T15	6	.562/14.27	.659/16.74	.242/6.15
20TXI-370	T20	8	.562/14.27	.664/16.87	.289/7.34
25TXI-370	T25	10	.562/14.27	.671/17.04	.335/8.51
27TXI-370	T27	12	.875/22.23	.678/17.22	.382/9.70
30TXI-370	T30	1/4	.875/22.23	.687/17.45	.443/11.25
40TXI-370	T40	5/16	.875/22.23	.829/21.06	.554/14.07
45TXI-370	T45	3/8	1.000/25.4	1.094/27.79	.667/16.94
50TXI-370	T50	7/16	1.000/25.4	1.100/27.94	.669/16.99
55TXI-370	T55	1/2	1.250/31.75	1.110/1.130	.803/.872
55TXI-370A	T55	9/16	1.250/31.75	1.127/28.63	.815/20.70
60TXI-370	T60	5/8	1.500/38.10	1.143/29.03	.815/20.70
70TXI-370	T70	3/4	1.500/38.10	1.668/42.37	1.00/25.40



### Round Washer Head

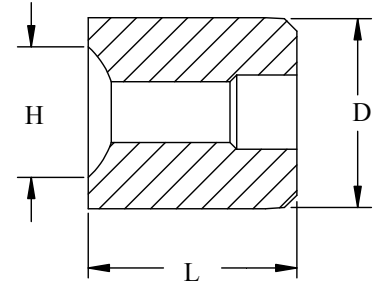
Part Number	Drive Size	Screw Size	D inch/mm	L inch/mm	H inch/mm
8TXI-280	T8	2	.562/14.27	.375/9.53	.134/3.40
8TXI-281	T8	3	.562/14.27	.375/9.53	.154/3.91
10TXI-281	T10	4	.562/14.27	.685/17.40	.175/4.45
10TXI-280	T10	5	.562/14.27	.695/17.65	.196/4.98
15TXI-280	T15	6	.562/14.27	.716/18.19	.223/5.66
20TXI-280	T20	8	.562/14.27	.718/18.24	.265/6.73
25TXI-280	T25	10	.875/22.23	.732/18.59	.295/7.49
27TXI-280	T27	12	.875/22.23	.781/19.84	.340/8.64
30TXI-280	T30	1/4	1.000/25.40	.774/19.66	.396/10.06



1. M2 material at RC 60-62.
2. Special Head Styles, Head markings and Materials available upon request.

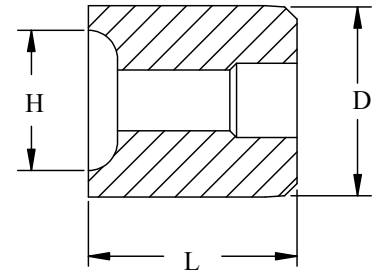
### Metric Pan Head - Full Crown

Part Number	Drive Size	Screw Size	D inch/mm	L inch/mm	H inch/mm
6TMI-308	T6	M2	.582/14.78	.394/10.01	.171/4.34
8TMI-308	T8	M2.5	.582/14.78	.649/16.48	.214/5.44
10TMI-308	T10	M3	.562/14.27	.656/16.66	.262/6.65
15TMI-308	T15	M3.5	.562/14.27	.659/16.74	.290/7.37
20TMI-308	T20	M4	.562/14.27	.664/16.87	.345/8.76
25TMI-308	T25	M5	.875/22.23	.671/17.04	.426/10.82
30TMI-308	T30	M6	1.000/25.40	.687/17.45	.517/13.13
45TMI-308	T45	M8	1.000/25.40	1.074/27.28	.680/17.27
50TMI-308	T50	M10	1.000/25.40	1.097/27.86	.850/21.59



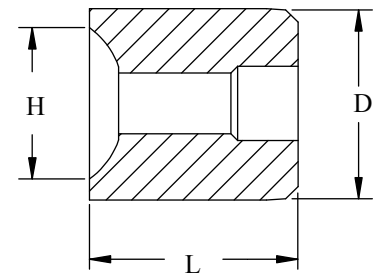
### Metric Pan Head

Part Number	Drive Size	Screw Size	D inch/mm	L inch/mm	H inch/mm
6TMI-307	T6	M2.2	.562/14.27	.408/10.36	.167/4.24
8TMI-307	T8	M2.9	.420/10.67	.420/10.67	.240/6.10
10TMI-307	T10	M3.5	.562/14.27	.675/17.15	.297/7.54
15TMI-307	T15	M3.9	.562/14.27	.675/17.15	.325/8.26
20TMI-307	T20	M4.2	.562/14.27	.680/17.27	.352/8.94
25TMI-307	T25	M4.8	.875/22.23	.690/17.53	.410/10.41
25TMI-307A	T25	M5.5	.875/22.23	.700/17.78	.460/11.68
30TMI-307	T30	M6.3	.875/22.23	.710/18.03	.536/13.61
40TMI-307	T40	M8	.875/22.23	.856/21.74	.663/16.84
50TMI-307	T50	M10	1.000/25.40	1.187/30.15	.829/21.056



### Metric Button Head

Part Number	Drive Size	Screw Size	D inch/mm	L inch/mm	H inch/mm
8TMI-302	T8		.562/14.27	.431/10.95	.226/5.74
10TMI-302A	T10	M3/3.5	.562/14.27	.675/.687	.235/.275
15TMI-302	T15	M4	.562/14.27	.692/17.58	.315/8.00
25TMI-302	T25	M5	.875/22.23	.715/18.16	.390/9.91
27TMI-302	T27	M6	.875/22.23	.735/18.67	.432/10.97
40TMI-320	T40	M8	1.000/25.4	.895/22.73	.575/14.61
45TMI-302	T45	M10	1.250/31.75	1.185/30.10	.720/18.29
50TMI-302	T50	M12	1.500/38.10	1.220/30.99	.862/21.89
55TMI-302	T55	M14	1.500/38.10	1.260/32.00	1.005/25.53
60TMI-302	T60		1.500/38.10	1.319/33.50	1.105/28.07



1. M2 material at RC 60-62.
2. Special Head Styles, Head markings and Materials available upon request.